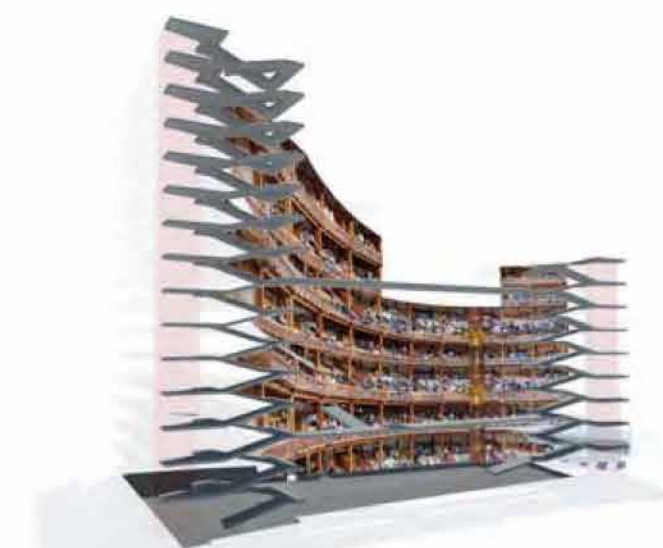
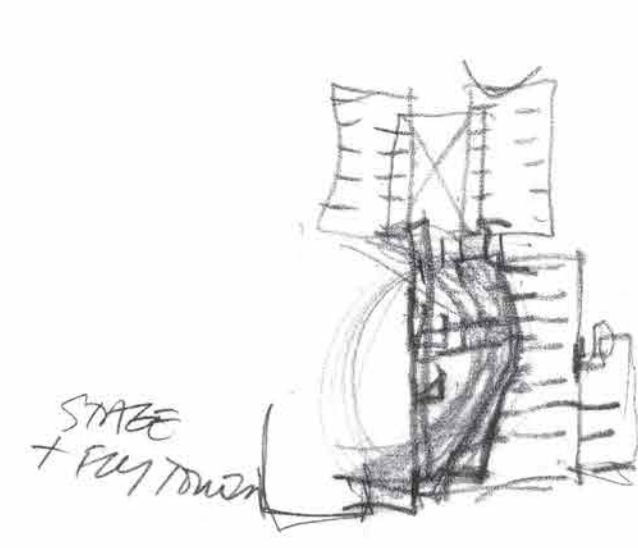


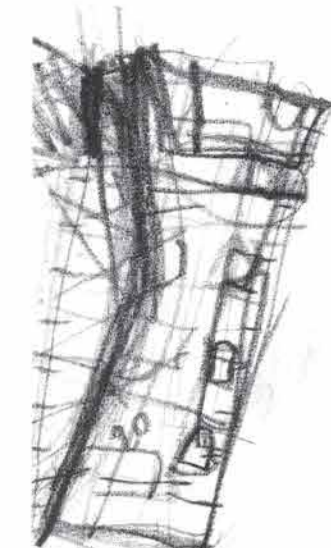
LA SCALA CONCEPT ELEVATION



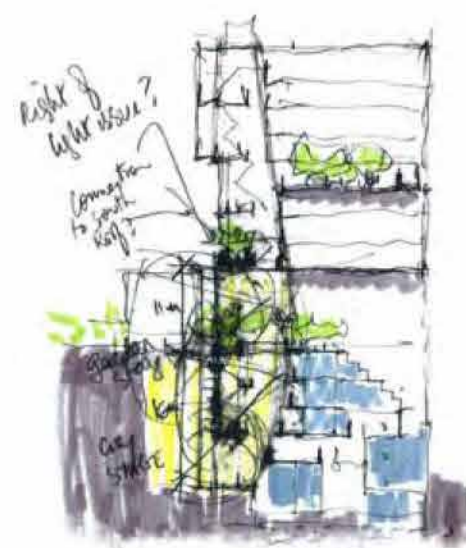
STAIRCASES OVERLOOKING



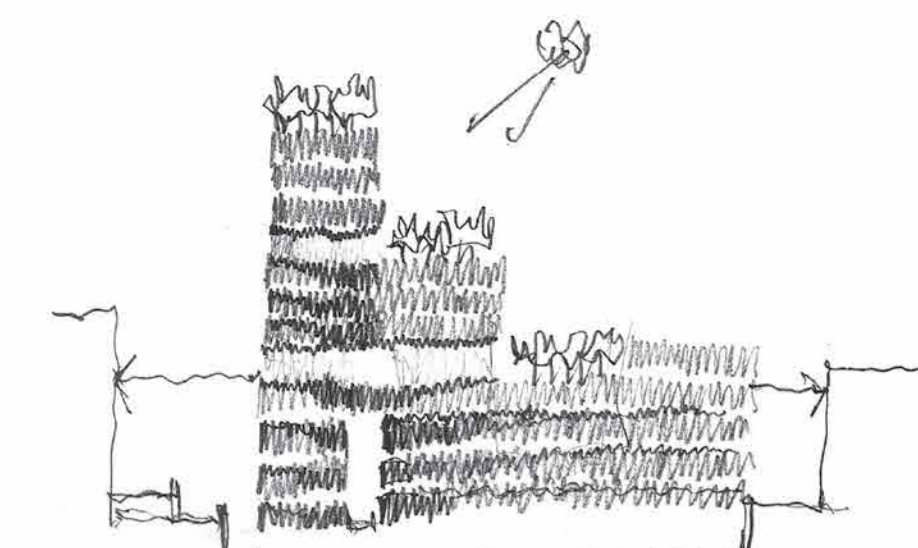
CONCEPT SECTION



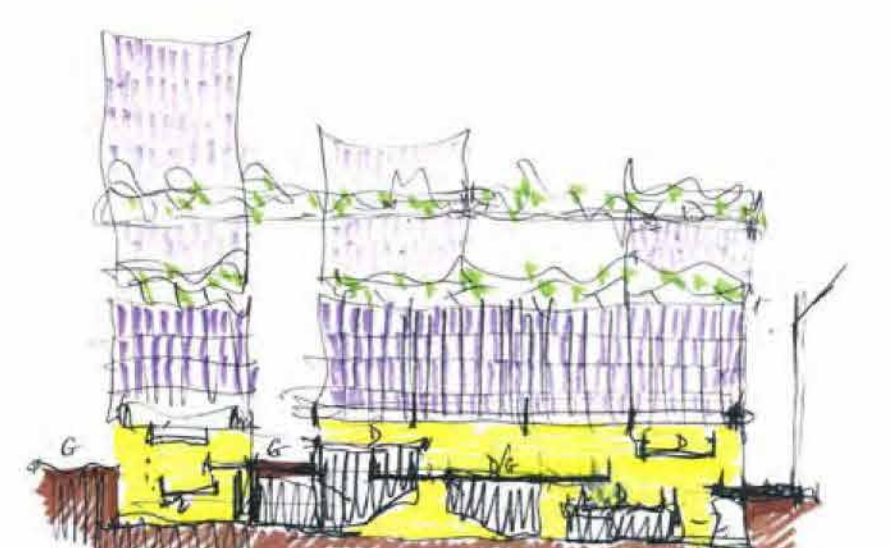
CONCEPT PLAN



INHABITED SECTION



CONCEPT ELEVATION



STRATA



WHITNEY MUSEUM, NEW YORK



SALK INSTITUTE, CALIFORNIA



STONE SCREEN, IRAN



STAIRS



KATARINA HISSEN (LIFT), STOCKHOLM



BERLIN PHILHARMONIE



MURCIA TOWN HALL



AIR STREET ARCHWAY



GALLERIA, BRUSSELS

### The City is the University

On visiting LSE we were struck by the vibrancy of the surrounding streets and by the fact that these are in fact the corridors of this university.

The idea of this project is to capitalise on this existing condition and to intensify this relationship. We were excited by the density of the site, the 'medieval' character of streets, small lanes, contrasting with grander urban spaces and Lincoln Inns Fields. We were conscious of the adjacent presence and atmosphere of the John Soane House and these labyrinthine spaces were in our minds when we thought about the weaving and interconnecting of large and small spaces within this new building.

We were inspired by the ethos of the LSE and the aspiration of this new Global Science Centre, to connect to all levels of society. It seems to us, given this aspiration for openness, that we should open the school to the outside world. We have explored the limits and potential of this openness. The Galleria, the semi-open stairs, the roof terrace, the new lane and archway, the study bridge, the external lift, are all devices used in this exploration. These 'city spaces' are used to draw the interior world of the school to the public edges and vice versa.

### Variety of eating spaces.

We have proposed 4 distinct spaces that can be used for dining. The food & beverage provision is dispersed on Levels -01, 00 and 01 to bring life to the levels and create focuses for social and other interaction, as well as supporting the space for entertaining on Level -01.

#### Street Level Dining area 1:

Level 00 – This might be an all-day cafe, such as an Italian Café, serving breakfasts and lunches with an attractive all-day coffee offer. The breakfast might be a bruschetta with fresh tomato, a juice and coffee. Lunch might be a wholesome salad, antipasti or a light pasta dish. There is a show kitchen so the area is lively all day long as people come and go.

#### Street Level Juice bar / dining area 2:

There is also on Level 00 a secondary area that might be developed as a fresh juice or smoothie bar, or similar speciality. This can also be used during peak times and as an overflow from the Cafe area.

#### Dining Area 3:

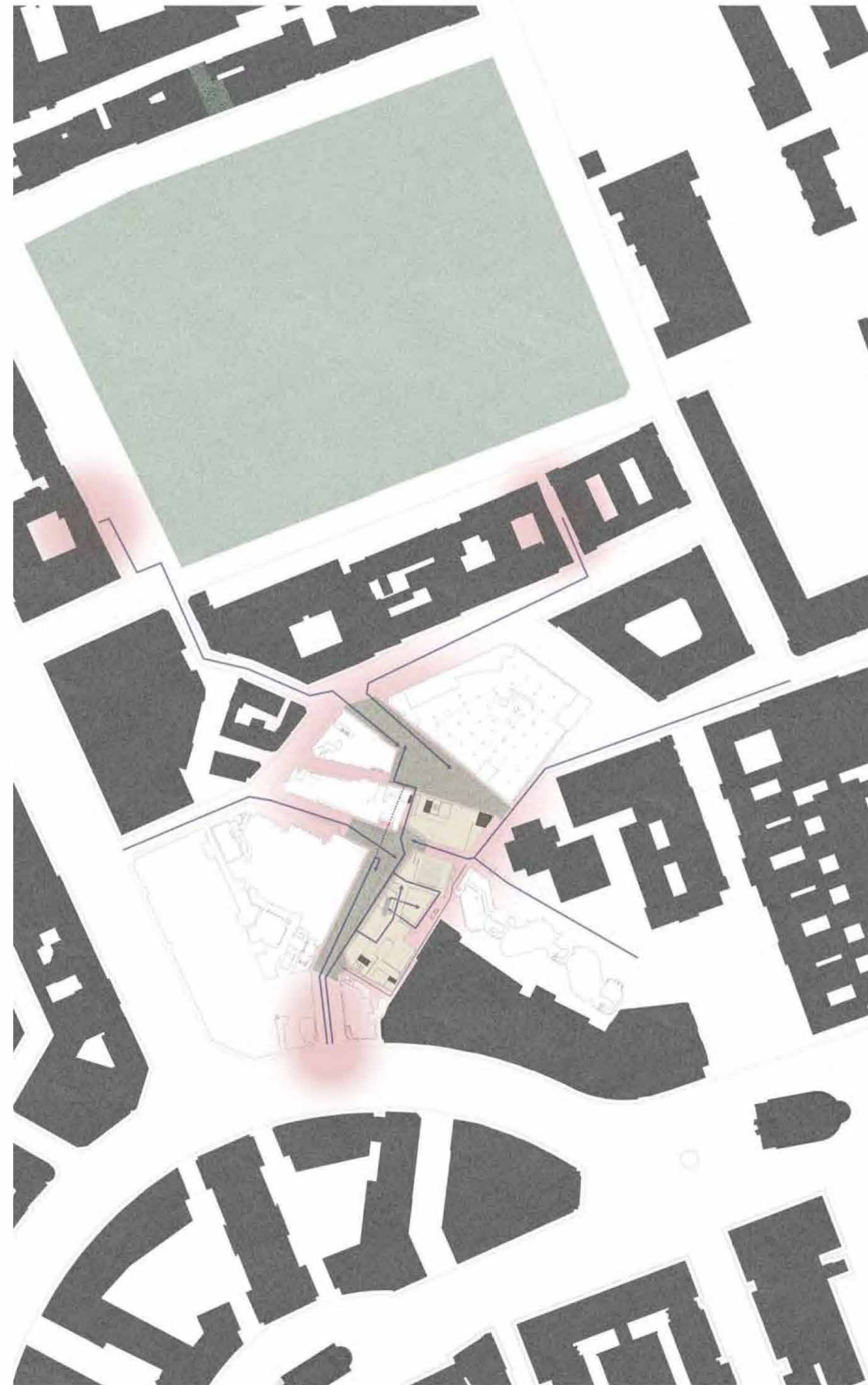
Level -01 – This is the larger restaurant but arranged more as a food hall, with counters being styled discretely so that the area can double as function space. Staff and students can gather, with each person choosing their preference of meal and then coming together to eat and converse. It is the hub for eating and visible from entry.

This space can therefore overlap as a party / reception area, performance area, a casual study space, gathering space or informal teaching 'forum'.

#### Dining Area 4:

Level 01 – This is envisaged to be either a grab & go style offer, similar to a Prêt, or might specialise such as a sushi bar. It is likely to be operated in conjunction with Levels 00 and -01 but could be operated independently.

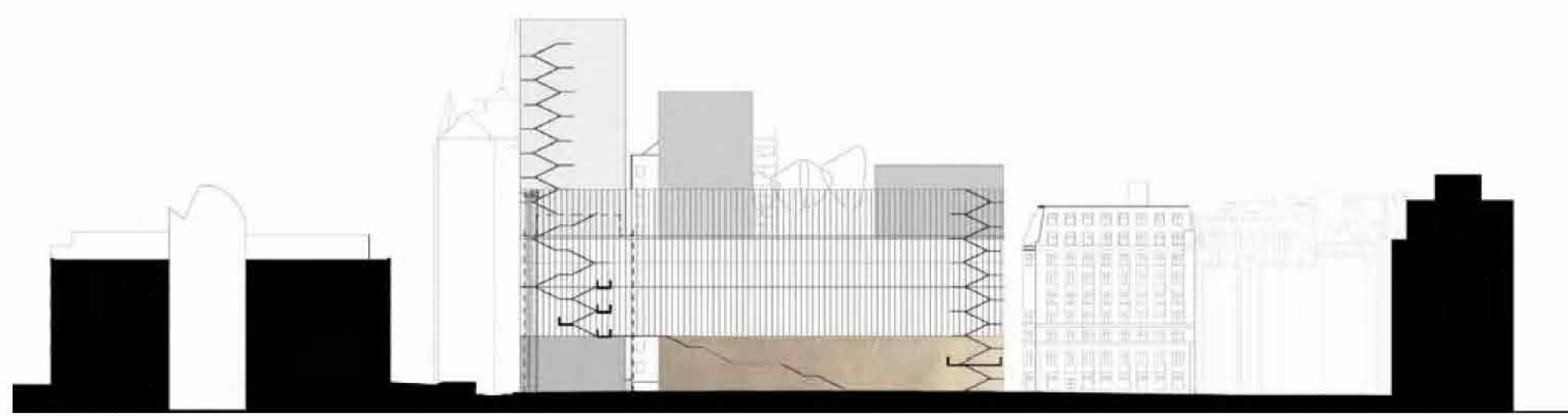
This is also a study area and breakout space adjacent to the Harvard rooms.



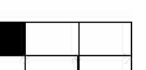
SITE PLAN  
1:1000

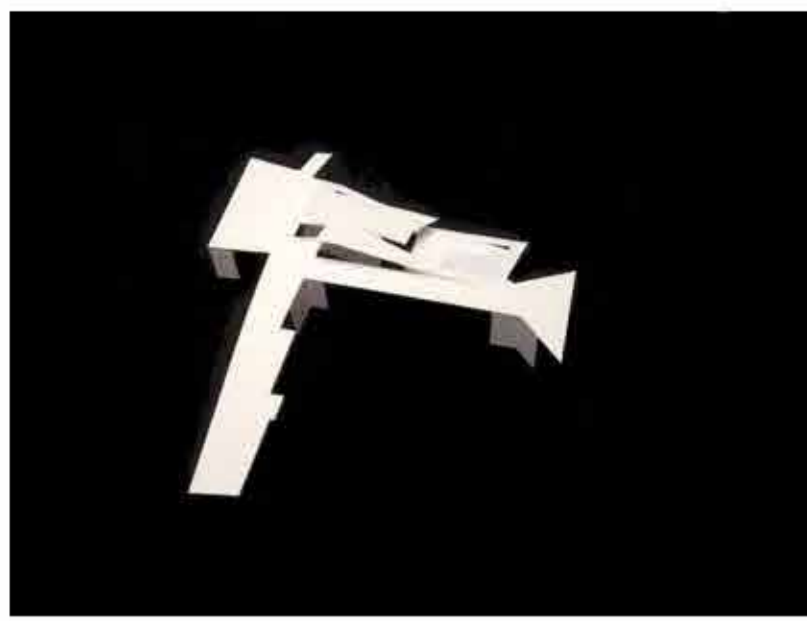


GROUND FLOOR PLAN  
1:250

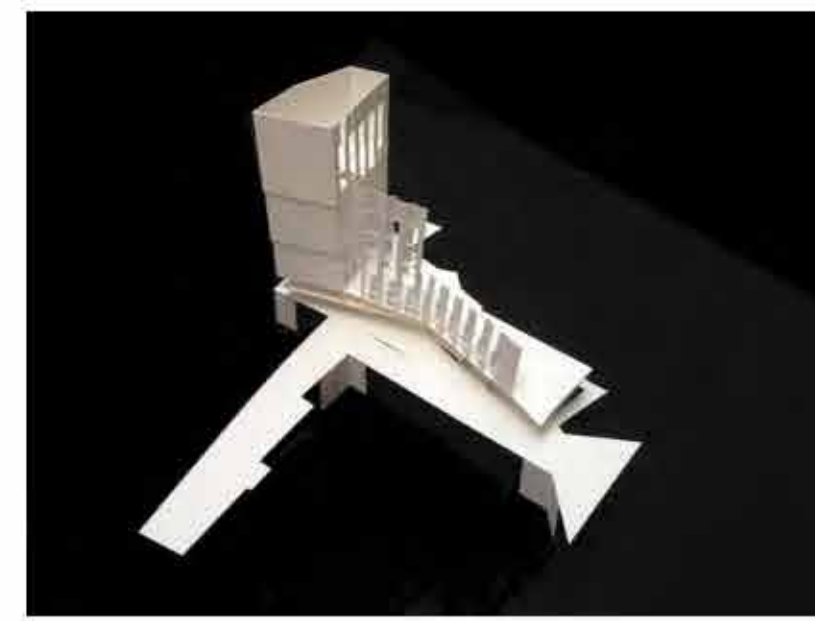


SITE SECTION  
1:1000





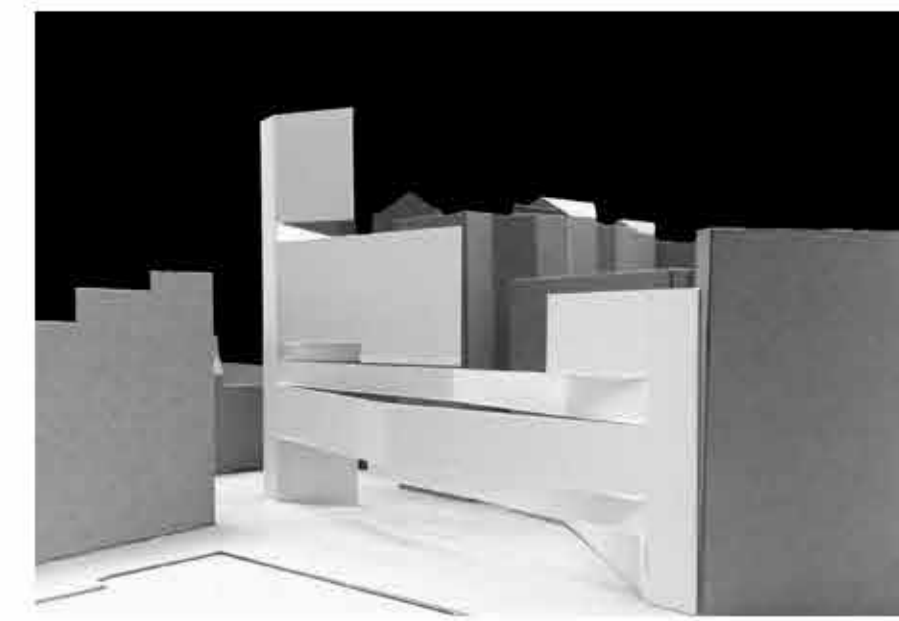
FOLDING GROUND PLANE



FOLDING SCREEN



DESIGN MODEL



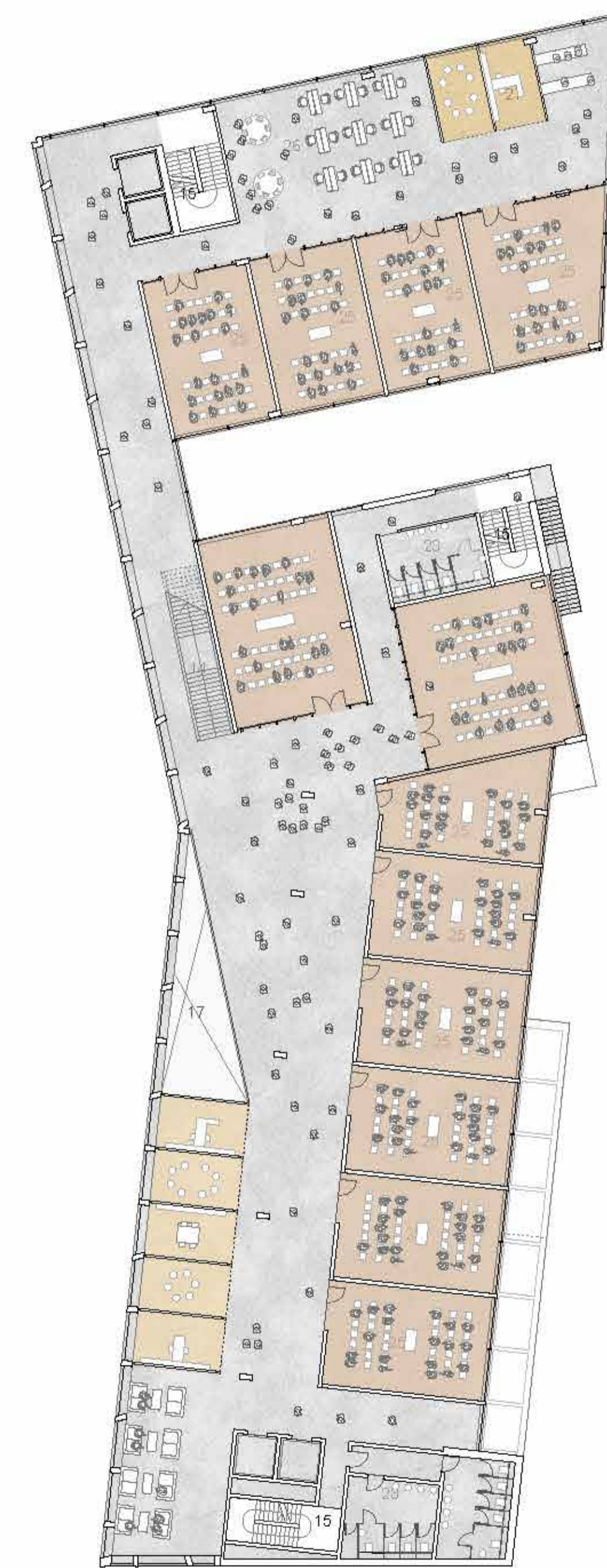
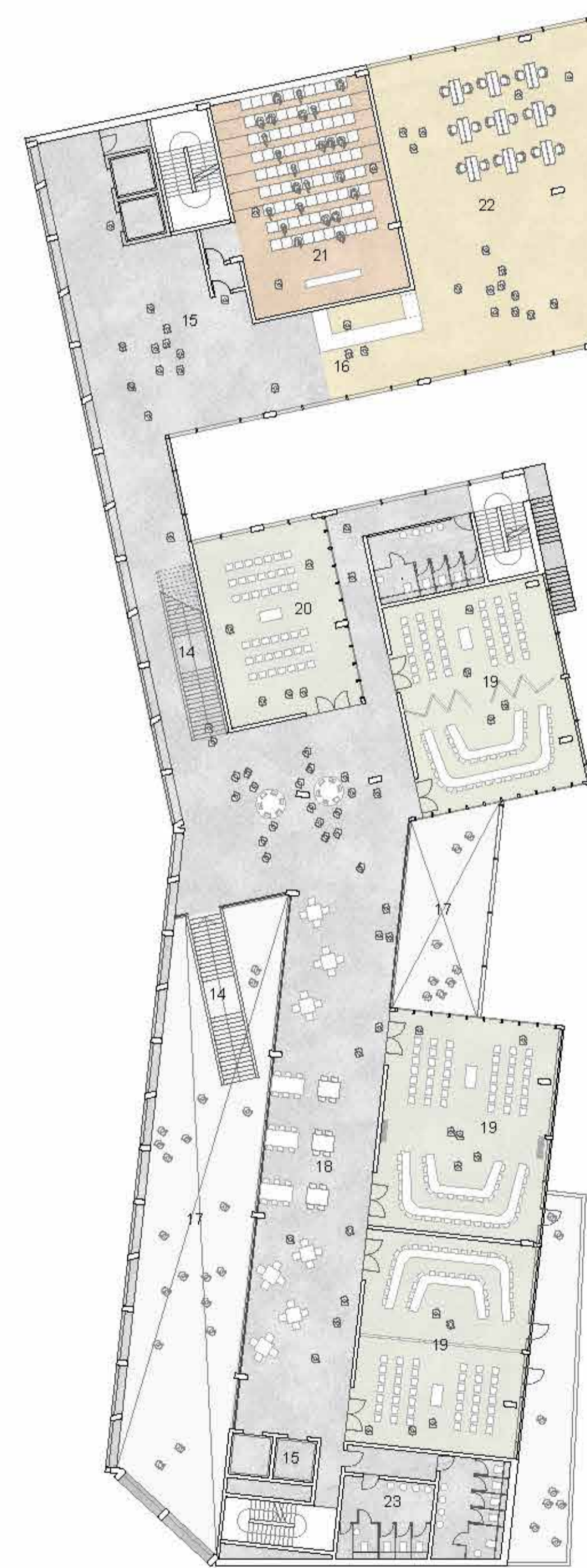
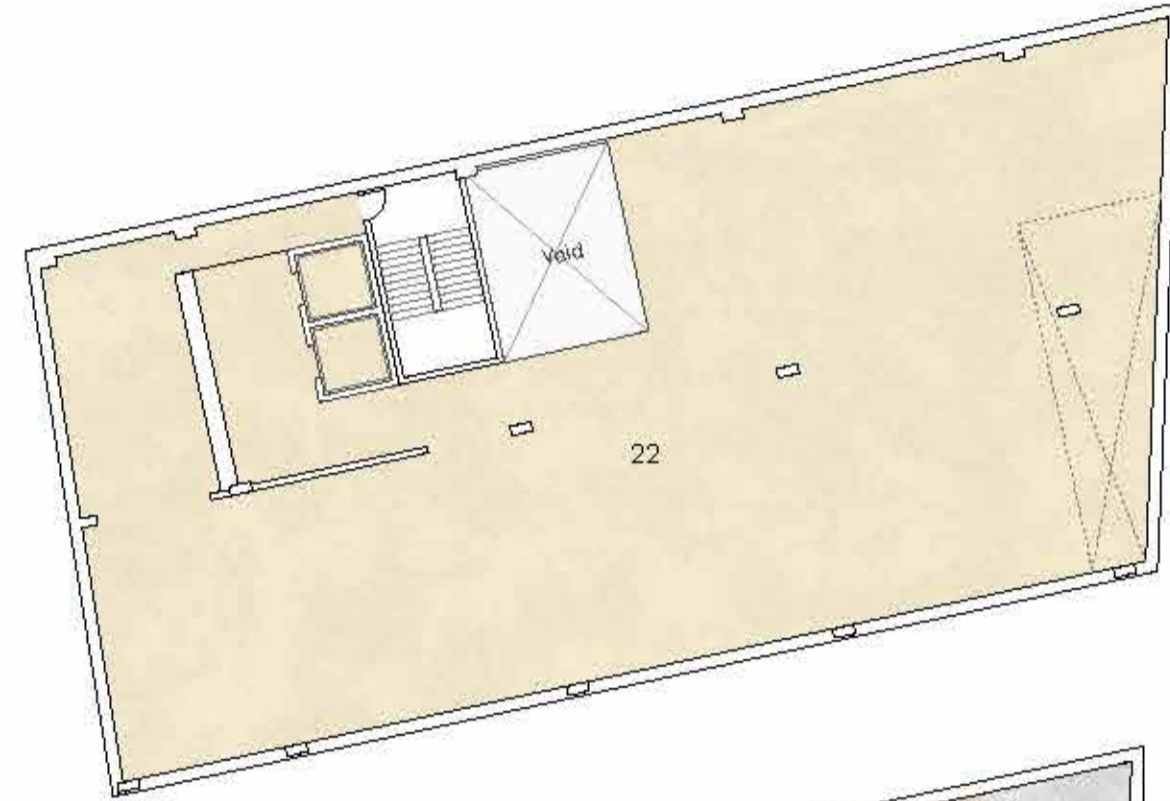
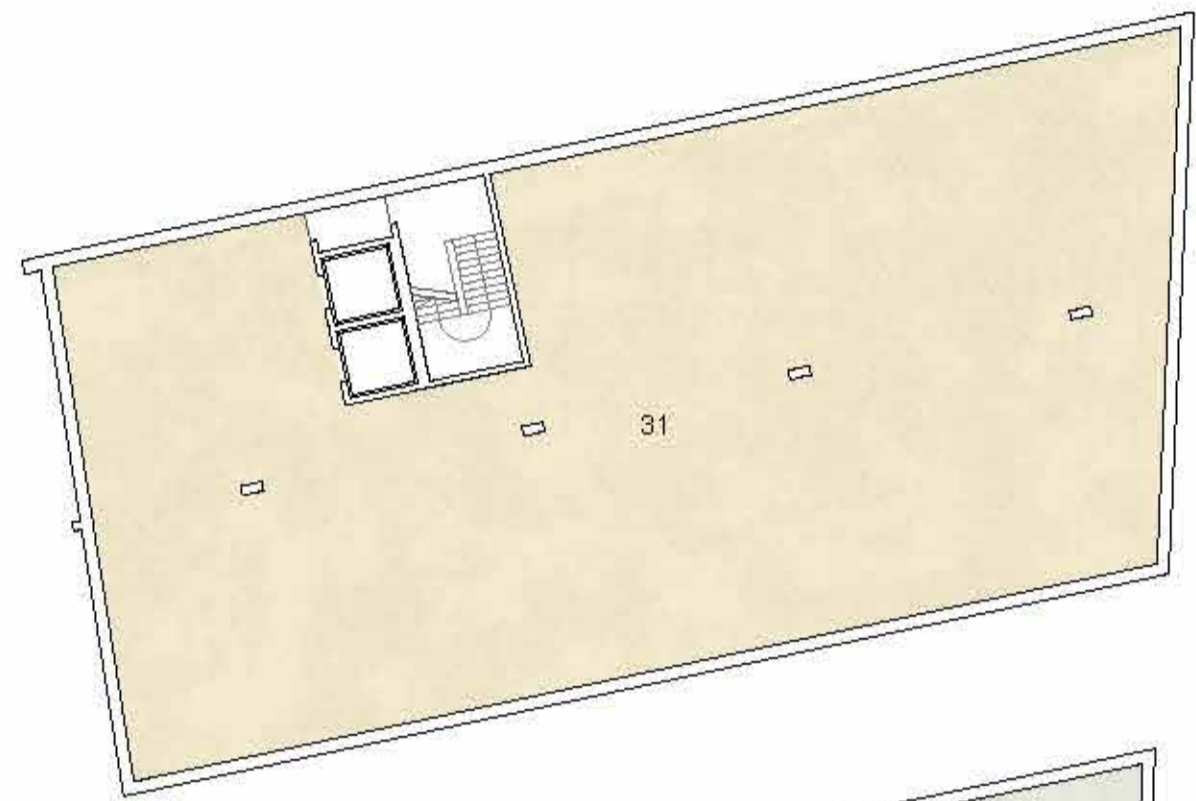
FOLDING SCREEN



MODEL IN CONTEXT



FACADE STUDY



1. Galleria Space
2. New Archway and Exterior Lift
3. New Laneway
4. Bicycle Parking
5. Goods Delivery
6. Entrance to Global Science Centre
7. Entrance to Professional Services Dining (All-day Café)
8. Dining Hall
- 8a. Kitchen
9. Show Kitchen
10. Lecture Theatre
11. Grand Staircase to Lower Level
12. Grand Staircase to Upper Levels
13. Stair and Lift Core
14. Escape Stairs
15. Void to Lower Levels
16. Lower Level
18. Gallery Space for Study / Dining
19. Harvard Room (70 Person)
20. Harvard Room (30 Person)
21. Lecture Theatre (80 Person)
22. Professional Services Department
23. WC
24. Seminar Room (50 Person)
25. Seminar Room (30 Person)
26. General Study / Research
27. Possible Cellular Offices
28. Study Bridge / Gallery
29. Void to Galleria Space
30. Roof Terrace
31. Plant





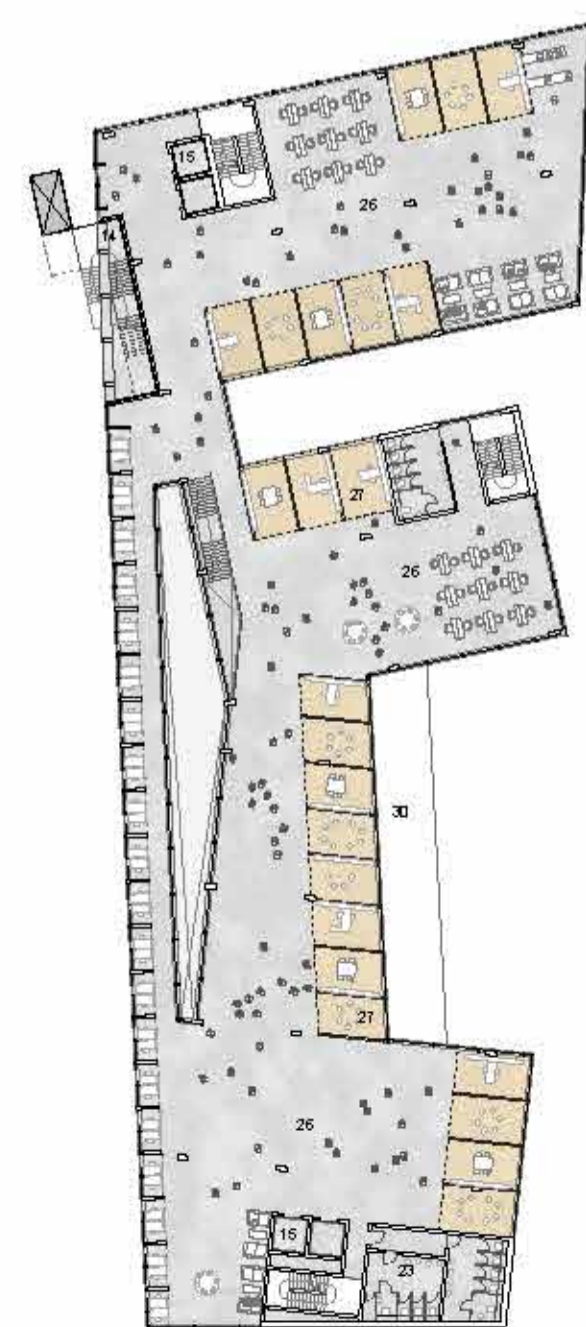
GRAND STAIR FROM STREET TO LOWER MEZZANINE



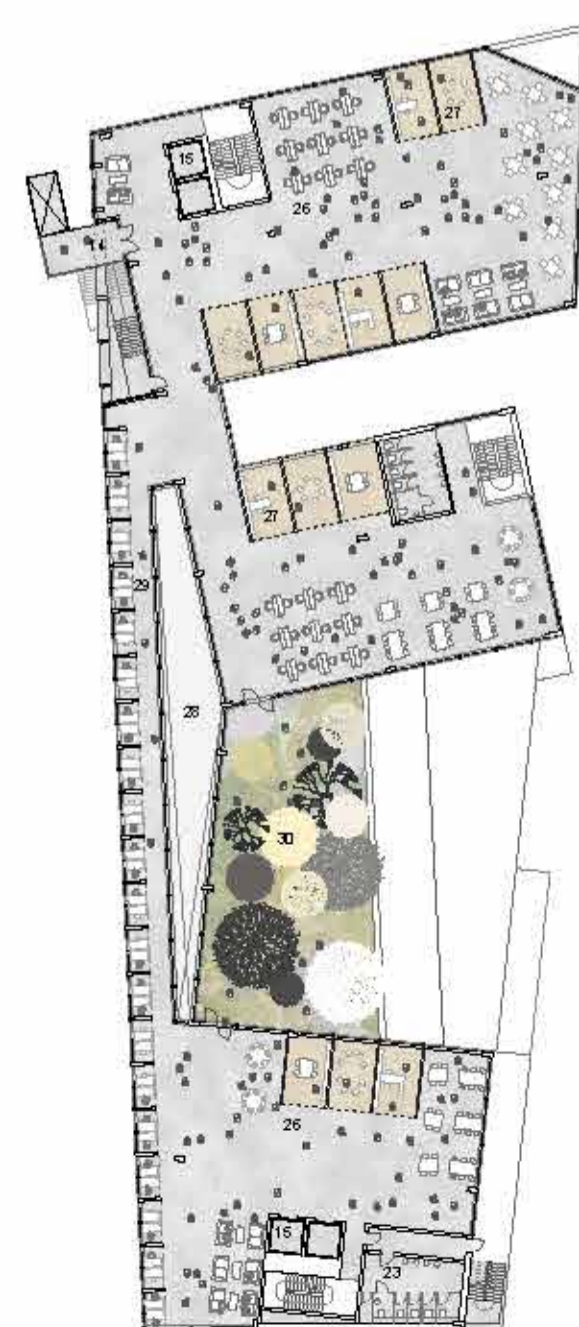
FOYER AND ENTRANCE BRIDGE



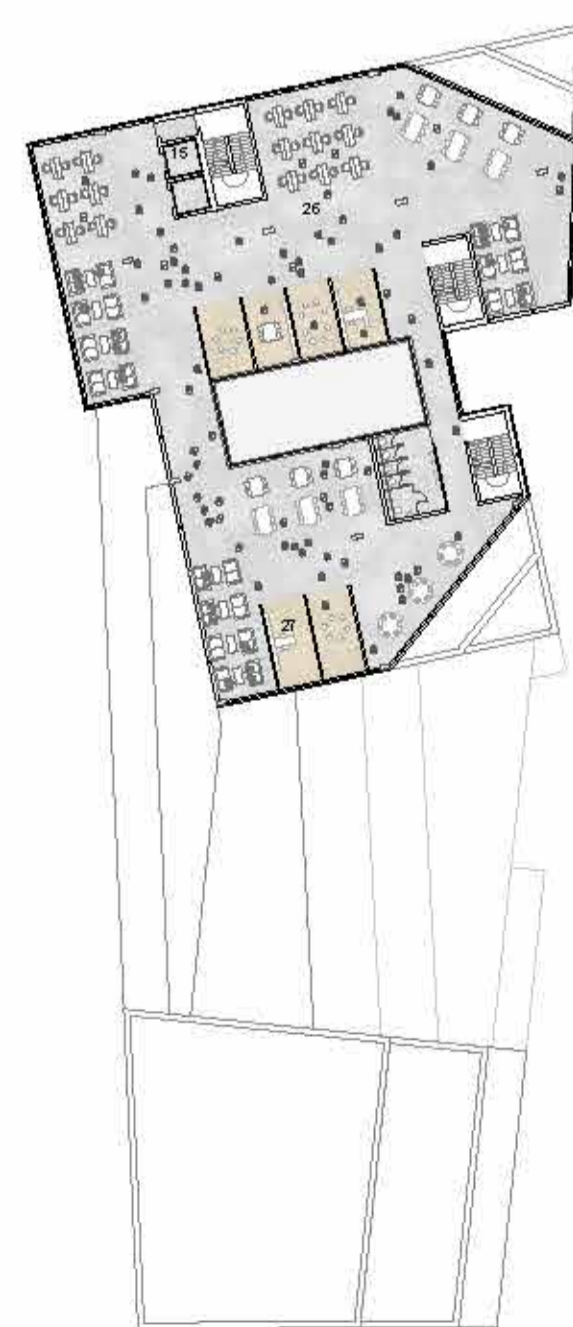
GRAND STAIRCASE TO LOWER 'FORUM' LEVEL



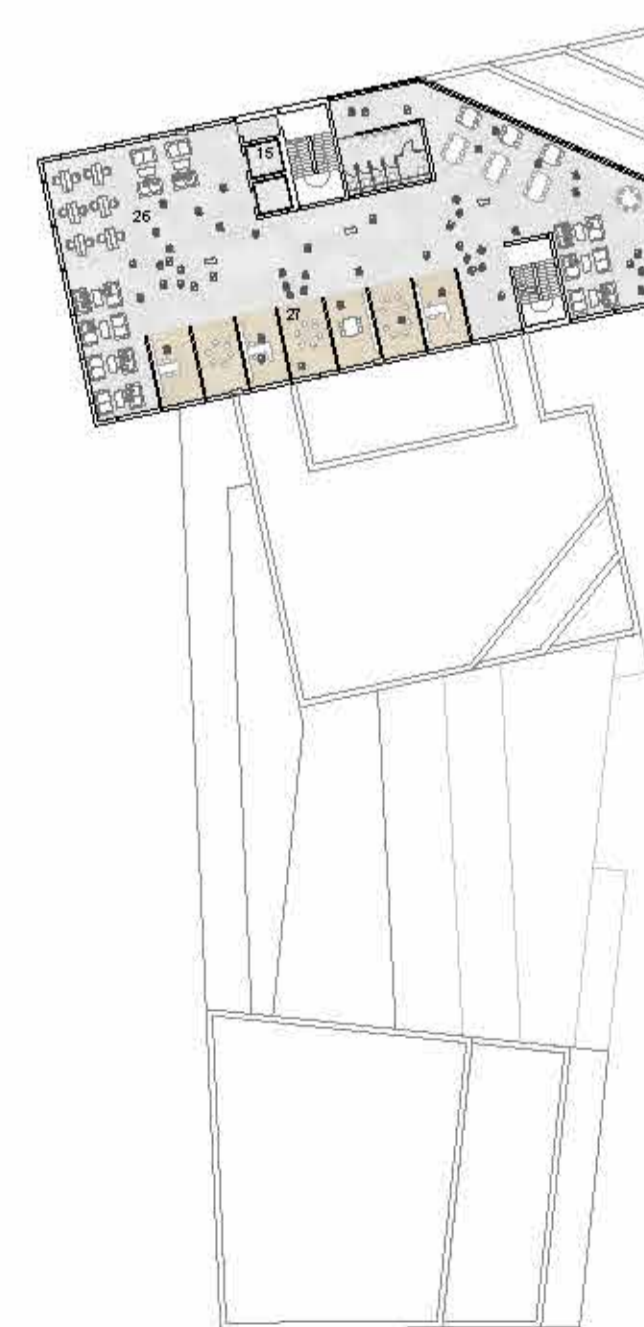
LEVEL 6  
1:500



LEVEL 6  
1:500



LEVEL 11  
1:500



LEVEL 14  
1:500

**Grand Staircase to Lower 'Forum' Level**

An extension of the raked floors of the two lecture theatres form the grand stair connection from Houghton Street to the lower mezzanine and lower forum / foyer / food hall level. We have explored the possibility of these theatre spaces being partly glazed so the audiences are visible and float in this grand hall. The intention is that the collective life and activities of the school interact with the city, with the social spaces, with the teaching, academic and study spaces.

**Grand Staircase to Upper Levels**

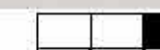
A gentle stair connects street / entrance / dining level to first floor level where the Harvard Rooms are located. A large void allows this floor to overlook the entrance hall and dining area and the cascading levels to the lower forum level.

This open stair continues up to second floor level leading to all the Seminar Rooms.

Above the second floor level, stairs to the upper academic and research spaces occupy the ends of the Galleria Space that they overlook. These "galleria" staircases are semi external from second floor to sixth floor rooftop level. They are more enclosed above this level. It is envisaged that the stair landings overlooking the 'galleria' will create popular social interactive spaces.

Space is left for an external lift in the new archway, which could connect street level to sixth floor rooftop.

Stair and lift cores occupy both ends of the building connecting all floors, providing access for all and escape from all levels.





**Public Realm and Materiality**

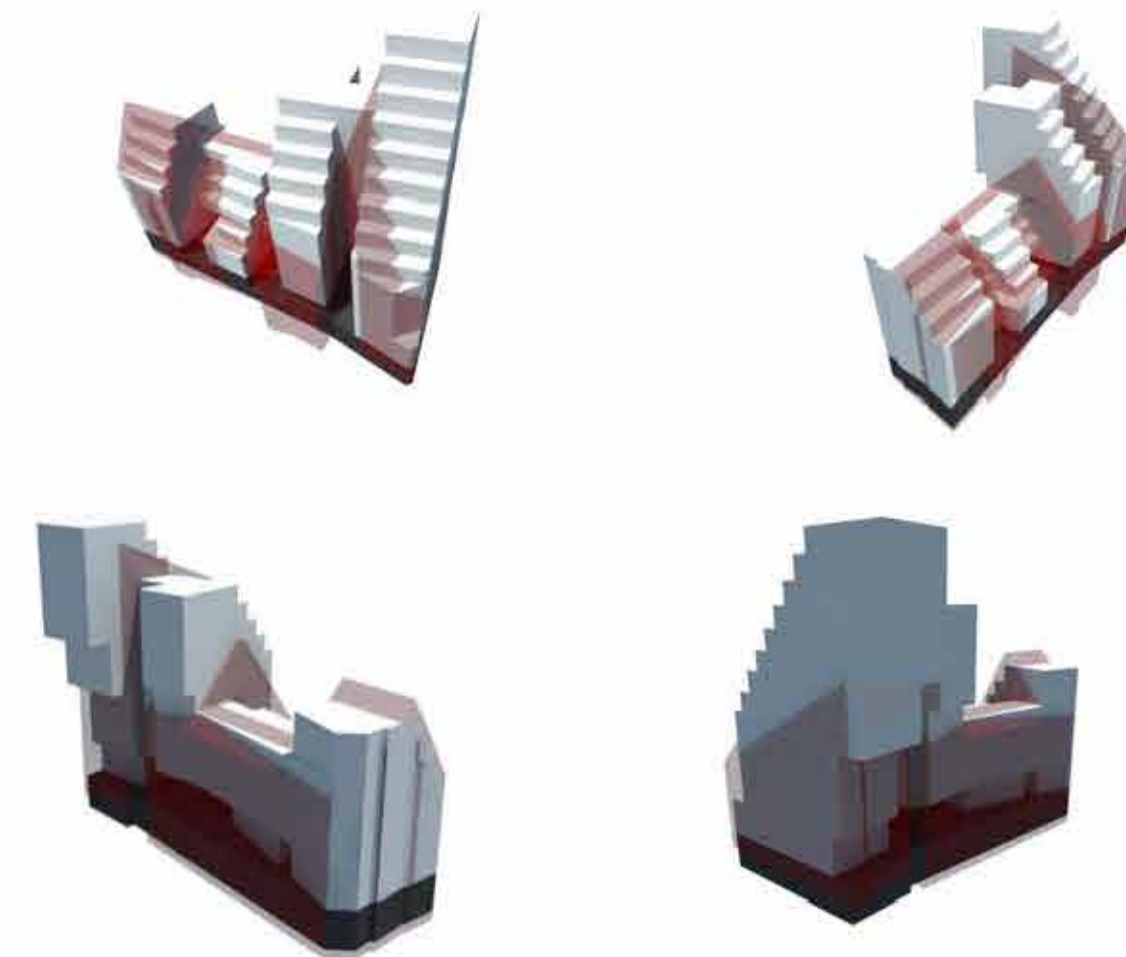
The building has a sense of surface, mass and weight but is playful and loose in its composition. The materials proposed are stone to all external walls, glazed terracotta reveals to Galleria façade, a rhythm of windows with changing depth and orientation, combined with large glass surfaces at lower floor levels.



NORTH ELEVATION  
1:500



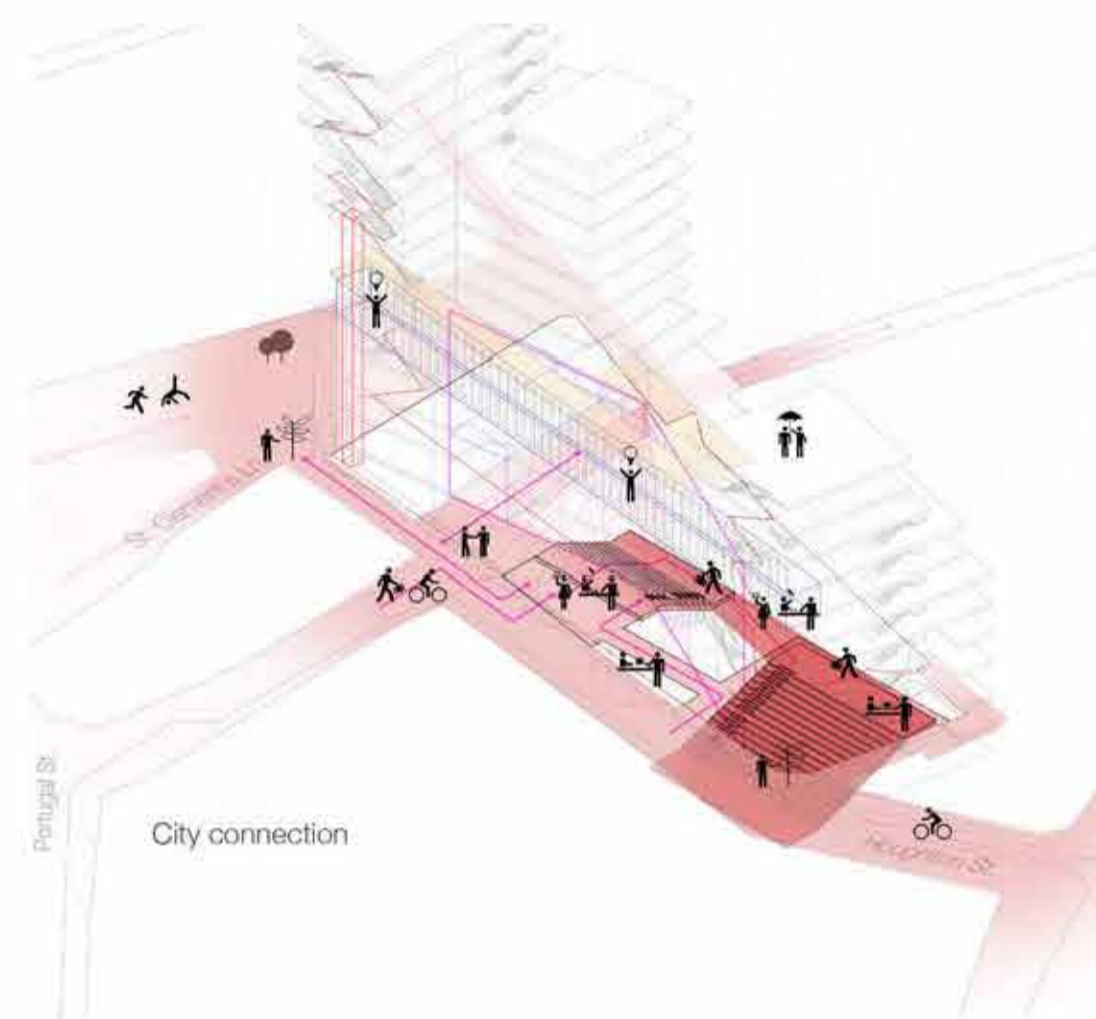
GREEN SPACES



RIGHTS OF LIGHT STUDY MODELS



GARDEN LEVEL AND STUDY/RESEARCH CLUSTER



MOVEMENT DIAGRAM

**Interactive Circulation Volumes and Gallery Spaces**

In general, access and circulation in the scheme, forms a series of interactive overlapping volumes, bringing all the various activities together to form an interactive vibrant community of researchers, teachers and students, welcoming to members of the public and open to the city.



PRIMARY ELEMENTS WITHIN THE BUILDING



WEST ELEVATION  
1:250

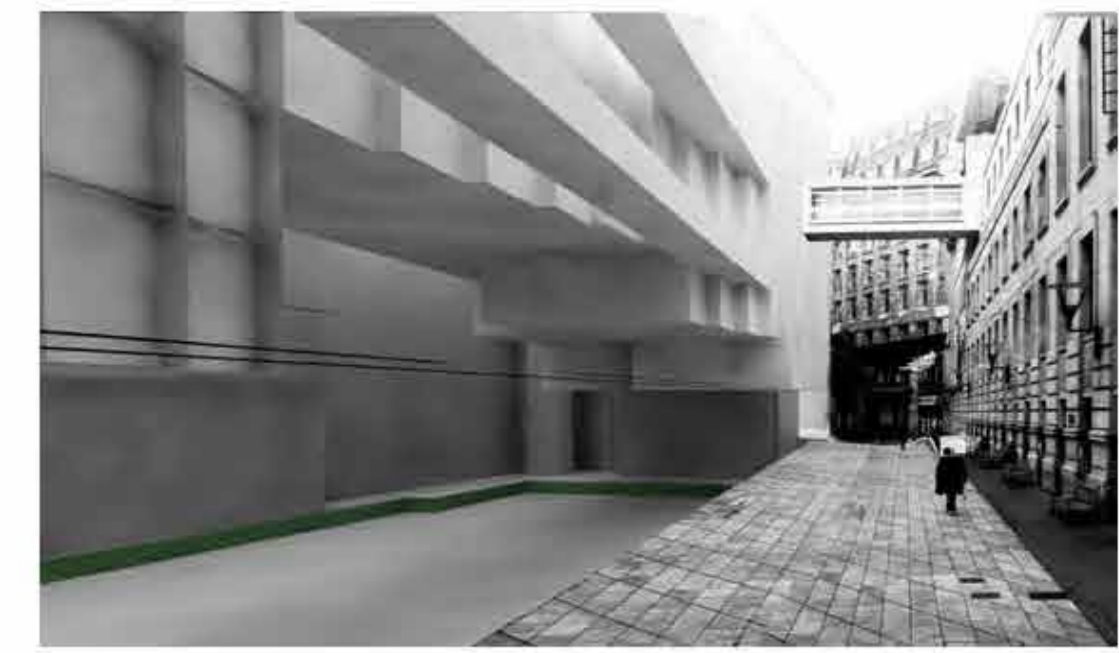




NIGHT THEATRE AND VERTICAL AUDIENCE



GALLERIA AND EXTERNAL 'STAGE' ON HOUGHTON STREET



GALLERIA IN THE CITY

**Galleria and new connection to John Watkins Plaza**

A semi-covered 'Galleria' type space is formed onto Houghton Street. This extends the full n/s 80m length of the site, and varies in width along this frontage. A new 'archway' is formed to connect the Houghton Street 'Galleria' to the John Watkins Plaza. This is a 'medieval' type crack in the block. It runs from above as well as at both ends. There is the opportunity for the entrance hall to the Waterstones building to open into and form part of this 'archway'.

This 'galleria' type space is thought about as a "theatrical" space, a space overlooked by research offices, study spaces, staircases that draw this space up to the more remote upper floors.

At the lower levels, the life of the city is brought into the building. At the upper levels from level +2 to level +6, the elevation onto the street / 'galleria' is designed to be intensely inhabited by students or professors, and on occasion, when events take place on the street, this wall becomes a vertical.

Entrance halls, Dining, Lecture theatres, Study spaces, social spaces, all have a direct physical and visual connection with the Houghton Street 'galleria'.

**Study Bridges**

At the upper levels, levels +5 and +6 we have made study bridges which double up as circulation spaces. These form the 'roof' of the 'galleria' and create a dynamic space overlooking the roof terrace and the city. While these bridges act as circulation spaces. Built-in en-route study carrels invite the student or researcher to stop, use a laptop, have a conversation. These spaces are seen as a kind of floating colonnade conducive to social engagement and to individual study at a beautiful window.

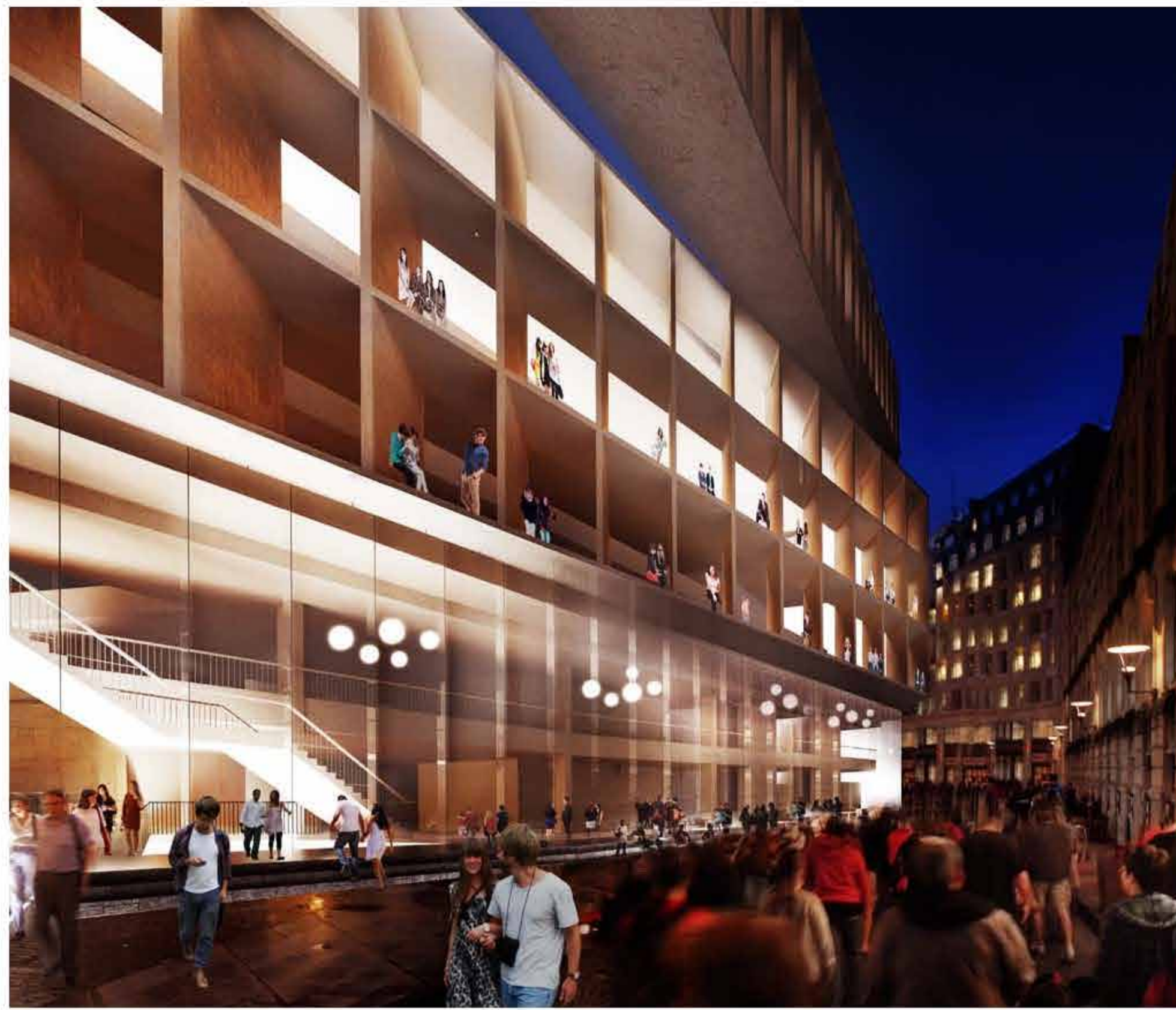


LONG SECTION  
1:250

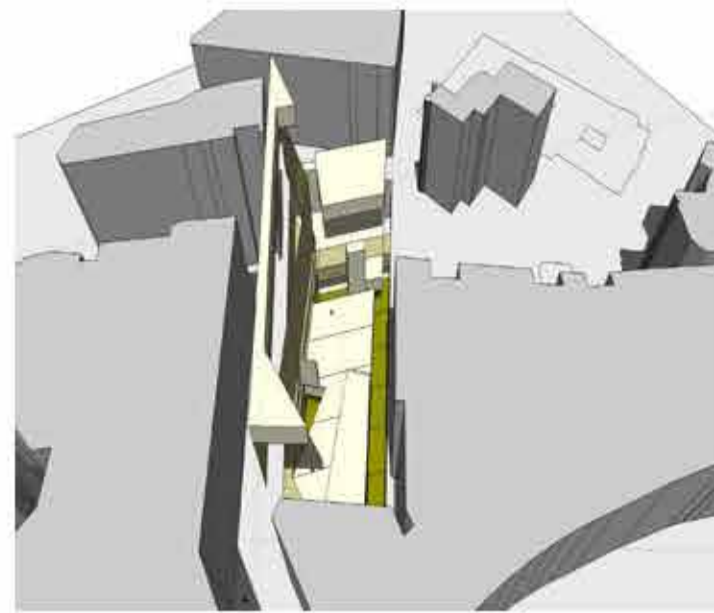


STUDY BRIDGES



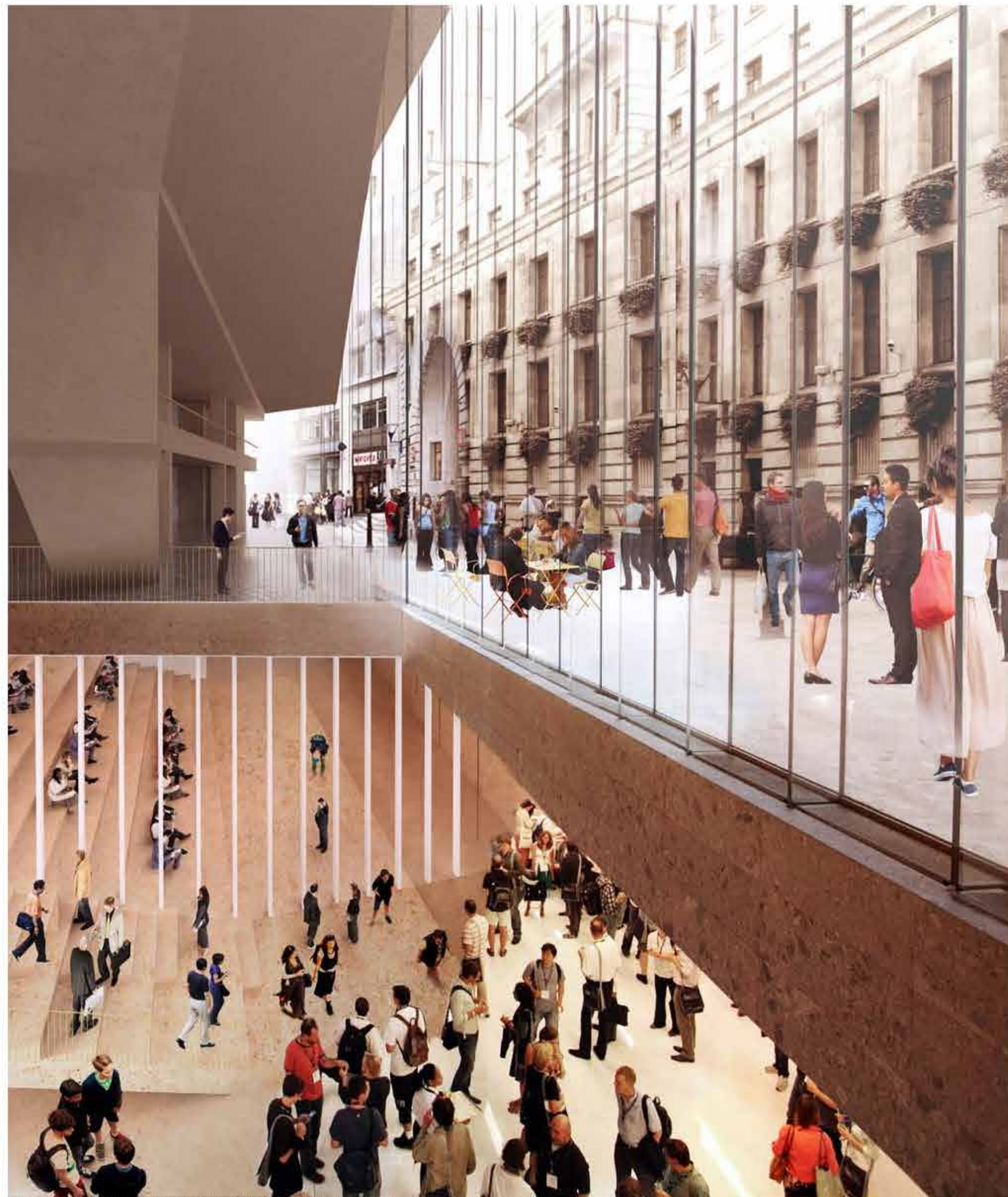


GALLERIAAS SOCIAL CONNECTOR



**New Small Laneway**

A new lane to the east / back of the new building is formed for pedestrian use, and we have made a set back along this frontage to allow for bicycle parking and escape stairs from the lower levels. Should agreement ever be reached to remove the existing boundary wall along this frontage, access points could be opened up in the future to the adjacent buildings that address this edge. By freeing up this boundary edge it allows the building to 'breathe' and anticipates a potential for the forming of new small street / lane.



GRAND STAIR HALL VISUALLY CONNECTING LOWER LEVELS TO STREET



SHORT SECTION  
1:150



**Rhythm of Windows**

In the setting up of the 'module' for this building, we took the idea of providing the maximum number of beautiful windows. Behind these windows cellular offices, study carrels, open plan spaces can happily co-exist. Each window wall has a depth for occupation, for intimacy, and for environmental control and this depth varies according to orientation, height above the street etc. The solid to void ratio of the window wall is 'scientifically mapped' to maximise daylight, reduce glare and overheating. This gives the external wall a richness and variety ranging from quite flush surfaces, to surfaces with stone or prefabricated concrete fins, projections and recesses. The interior world is also enriched by the quality and depth of the window. The 3m module allows for a variety of sizes of room and for the mixing of open plan spaces with cellular office space.



SHORT SECTION  
1:150

